



# 51 VIOLET CLOSE



## Located In

### The Vistas of Olds

- ◆ Large tie-shaped lot backing onto walking path
- ◆ 1420 sq ft bungalow
- ◆ Open concept
- ◆ Quartz counters
- ◆ Luxury vinyl plank, tile & carpet flooring
- ◆ Custom pantry with prep station
- ◆ Double sinks & tile shower in ensuite
- ◆ Main floor laundry
- ◆ 9' lower level, development ready
- ◆ Half Duplex
- ◆ Quick possession



## \$519,900.00

Price includes Home, Lot & (Net) GST

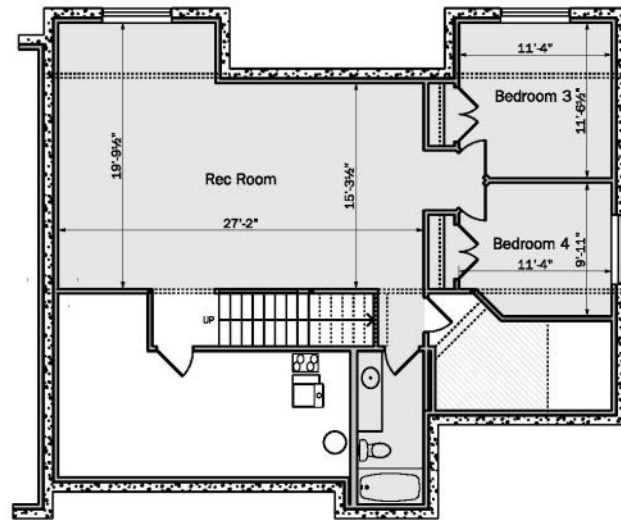
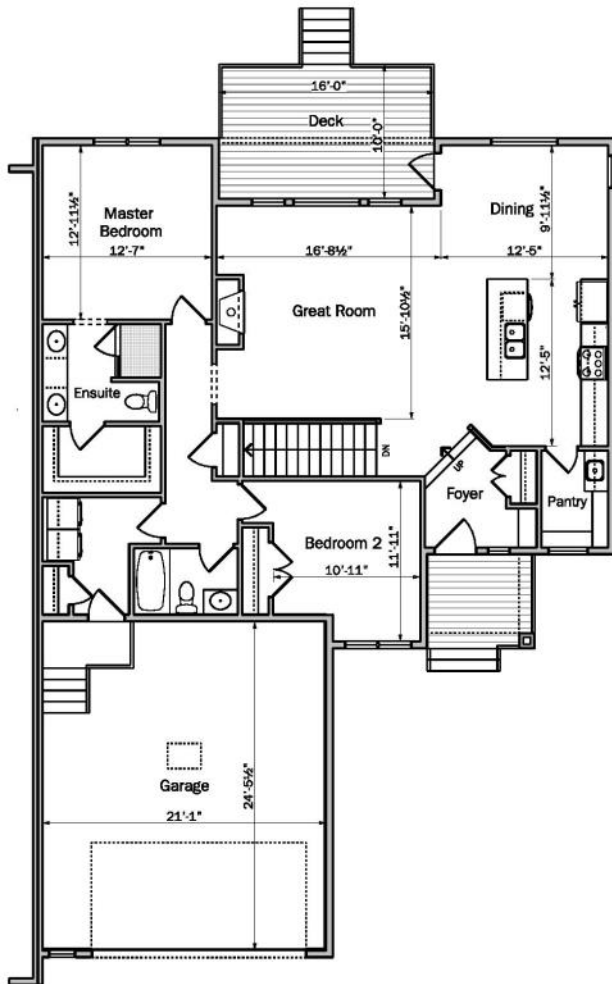


**LYLE STEVENSON**  
 President  
**STEVENSON HOMES**  
 \* \* \* \* \*  
 Cell: 403.507.5000





## 51 Violet Close, Olds



Main floor area - 1,420 s.f.  
 Optional developed basement floor area - 847 s.f.  
 Garage area - 550 s.f.

House width - 43'-0"  
 House depth - 66'-6" (including deck)



**STEVENSON  
 HOMES**

Division of Stevenson Development Corporation  
 Creating dreams since 1988

